



FRESHMAN GUIDEBOOK 2020-21
UNIVERSITY OF WASHINGTON
ADMISSIONS / ACADEMICS / STUDENT LIFE

UW TACOMA QUICK FACTS

5,352

Student headcount 2019-20

40%	Caucasian/White
19%	Asian American
14%	Hispanic/Latinx
9%	African American
8%	Reporting two+ races*
5%	International
1%	Hawaiian/Pac. Islander
1%	Native American
3%	Not indicated

*Students reporting multiple race/ethnicities are counted in each category. All information shown is current as of Autumn Quarter 2019.
†Chronicle of Higher Education, Almanac 2019.

TOP50

Colleges with the greatest racial/ethnic student diversity†

57%

Freshmen who are first-generation college students

Students whose parents never attended college or never completed a degree.



JAI'SHON

'22 Business Administration;
Communication; Pack Advisor

Jai'Shon loves his job. The Auburn Riverside High School graduate and first-generation college student is a Pack Advisor and enjoys getting the chance to welcome new students to campus. "I was nervous when I started taking classes," he said. "I thought college would be too hard but it's different than high school because you have a lot more freedom." Jai'Shon is considering pursuing a master's degree in marketing.

W



A University of Washington degree links you for a lifetime with the benefits of a 159-year international reputation for exemplary teaching and research.

WHY UW TACOMA?

Get a **UW DEGREE** with courses led by faculty who love teaching and care about their students.

We're a public university: **WE VALUE DIVERSITY** and work to bring success to all our students.

THE CITY IS YOUR CAMPUS. Step out of the classroom and into Downtown Tacoma's restaurants, shops, museums and music venues.

Choose from **CAREER-FOCUSED MAJORS** in high-demand fields with an emphasis on social responsibility.

Enjoy **SMALL CLASSES** where one-on-one instruction and guidance are the rule, not the exception.

Our **URBAN-SERVING MISSION** means faculty, staff and students contribute to the growth and prosperity of our region.

tacoma.uw.edu/freshman

WHY UW TACOMA?	1	STUDENT LIFE	12
FACULTY	2	CAMPUS HOUSING	14
STUDENT SUPPORT	4	ADMISSION	17
CAREER-FOCUSED MAJORS	5	HOW TO APPLY	18
DISCOVER TACOMA	8	COSTS + FINANCIAL AID	20
TACOMA MAP	10	VISIT UW TACOMA	21

The University of Washington Tacoma is accredited as a part of the University of Washington by the Northwest Commission on Colleges and Universities. Individual academic programs may have additional accreditations. The University of Washington reaffirms its policy of equal opportunity regardless of race, color, creed, religion, national origin, sex, sexual orientation, age, marital status, disability, or status as a disabled veteran or Vietnam era veteran in accordance with university policy and applicable federal and state statutes and regulations. To request disability accommodation, including American Sign Language interpretation, contact the **Disability Resources for Students** office at **253-692-4508**, drs@uw.edu or submit a request at <http://www.tacoma.uw.edu/UWTDRS/eventaccess>. The University of Washington Tacoma makes every effort to honor disability accommodation requests. Requests can be responded to most effectively if received as far in advance of the event as possible, preferably at least 10 days.



TANYA VELASQUEZ

Senior Lecturer, Sociology
UW Distinguished Teaching Award 2020

Ms. Velasquez's teaching is recognized for using high-impact, community-engaged teaching practices and individualized, long-term mentoring. She integrates knowledge of community and diversity into teaching and learning in the classroom and beyond. Her commitment to equity and excellence is at the very heart of what she brings the campus community.



MATT TOLENTINO

Assistant Professor,
School of Engineering & Technology

Dr. Tolentino collaborates with the Tacoma Fire Dept. to integrate new technology to be able to track other firefighters during hazardous conditions.



OUR FACULTY ARE INVOLVED

A WORLD CLASS EDUCATION BEGINS IN THE CLASSROOM

THE FACULTY AT UW TACOMA ARE LEADERS IN THEIR RESPECTIVE FIELDS.

Their internationally-recognized research has contributed to our understanding of some of the major scientific and cultural issues of the day.

From stress measuring robots to firefighting drones, the faculty at UW Tacoma are on the cutting edge of research. Our faculty have partnered with local organizations and businesses to address everyday challenges

including water pollution, gun violence and affordable housing. They are leading the way both in and out of the classroom.

As a student at UW Tacoma, you'll have access to some of the brightest minds in academia. With an average class size of 29 students, UW Tacoma professors have a more student-centered approach to teaching that ensures everyone has the opportunity to learn and succeed.



DANICA MILLER

Assistant Professor,
American Indian Studies

Dr. Miller is a member of the Puyallup Tribe of Nations. Her research focuses on Puyallup history and Indigenous Sovereignty. She received the UW Distinguished Teaching Award in 2018.



CHRISTOPHER SCHELL

Assistant Professor,
Science and Mathematics

Dr. Schell is an urban ecologist with an affinity for coyotes. He launched the Grit City Carnivore Project in collaboration with Pt. Defiance Zoo & Aquarium, Northwest Trek and Metro Parks Tacoma to research how carnivores are adapting to cities.





16 LIBRARIES ON THREE
UW CAMPUSES



UW TACOMA STUDENTS CAN BORROW
LAPTOPS + A VARIETY OF MULTIMEDIA



WE SUPPORT YOU

COLLEGE TAKES WORK

There are assignments to do, deadlines to meet, requirements to fulfill and forms to complete. The staff and faculty at UW Tacoma are here to help.

UNIVERSITY ACADEMIC ADVISING will help you sort out your class schedule and make sure you're on track to graduate. Need help with homework? The **TEACHING & LEARNING CENTER** inside UW Tacoma's Library has experienced tutors waiting to assist on most subjects.

PACK ADVISORS and **FIRST GEN FELLOWS** foster a successful transition into the UW Tacoma community and the **CENTER FOR EQUITY & INCLUSION** aims to create safe and welcoming spaces to cultivate our diverse campus community.

Life doesn't stop when you step on campus. You might get sick. You might find yourself stressed and in need of someone to talk to. We have a **COUNSELING CENTER** on campus and our partnership with **FRANCISCAN HEALTHCARE** ensures you have access to a doctor any time of day.

There may also come a time when you need a little more. **THE PANTRY** provides students with free food and our **OFFICE OF STUDENT ADVOCACY & SUPPORT** can work with you to create a long term solution to whatever difficulty you're experiencing.

Our **VETERAN & MILITARY RESOURCE CENTER** assists veterans, active-duty members and their families with making the most of their educational benefits. The VMRC offers campus programming for our military-connected students.



VINCENT

'21 Healthcare Leadership
"I really want to focus on what it means to be a UW Tacoma Husky." For Vincent, that means starting a ping-pong club, addressing food insecurity on campus and serving as ASUWT president. "My job is to make sure that on any decision-making that happens with administrators, there's some student voice included, so that it's transparent, so that everyone's included."

57% of UW Tacoma freshmen are the first in their families to attend college.

CAREER-FOCUSED DEGREES + MAJORS

SCHOOL OF INTERDISCIPLINARY ARTS AND SCIENCES

AMERICAN STUDIES BA

Examines "American" concepts through the arts, politics and social life. Develop critical skills to understand the cultural ideologies produced by U.S. institutions and systems such as class, ethnicity, gender and race.

ARTS, MEDIA AND CULTURE BA

Focuses on how broadly-defined fields of art and media operate within and transform culture. Learn to interpret literature, visual art, film, music or other media. Four tracks: **COMPARATIVE ARTS, LITERATURE, FILM AND MEDIA** and **VISUAL AND PERFORMING ARTS**.

BIOMEDICAL SCIENCES BS

Examines life sciences including cell biology, microbiology, molecular biology, genetics, biochemistry, and physiology. Prepares you for training and employment in healthcare- and biology-related fields.

COMMUNICATION BA

Develops theoretical knowledge and practical skills in mass media through an interdisciplinary, multicultural curriculum. Two tracks: **PROFESSIONAL** and **RESEARCH**.

ENVIRONMENTAL SCIENCE BS

Provides a science background focused on understanding and solving environmental issues. Involves coursework in, and hands-on experience with, biology, chemistry, the geosciences, physics and math. Two options: **CONSERVATION BIOLOGY AND ECOLOGY** and **GEOSCIENCE**.

ENVIRONMENTAL SUSTAINABILITY BA

Prepares you to understand, analyze, and solve environmental and sustainability challenges. Four available options: **BUSINESS/NONPROFIT, COMMUNICATION, EDUCATION** and **POLICY AND LAW**.

ETHNIC, GENDER AND LABOR STUDIES BA

Explores how communities form and are transformed by class, ethnicity, gender, nationality, religion and citizenship. Three options: **LABOR STUDIES, GENDER STUDIES** and **ETHNIC STUDIES**.

GLOBAL STUDIES CONCENTRATION BA

Explores artistic, cultural, political and economic patterns in an international context. Choose to study one or more world regions or specific themes. Advanced language study is an integral component.

HISTORY BA

Challenge your preconceptions of the world by delving into the past. Four thematic options are offered: **ARTS, CULTURE AND SOCIETY, GLOBAL HISTORY, LABOR AND SOCIAL MOVEMENTS** and **POWER, GENDER AND IDENTITY**.

INDIVIDUALLY-DESIGNED CONCENTRATION BA

This concentration is an individually-designed option for those who wish to create a program of study by combining selected courses from within our range of programs.

INTERDISCIPLINARY ARTS AND SCIENCES BA

Provides broad exposure to key areas of knowledge within the arts and sciences, while stressing their interconnectedness. Emphasizes interdisciplinary skills and thinking needed to function successfully in a rapidly changing world.

LAW AND POLICY BA

Develops theoretical reasoning and analytical skills for assessing current topics in law and policy. Critically examines the political, social, historical and economic context of law in the U.S. and around the world.

MATHEMATICS BS

Explores a broad range of ideas in mathematics and its applications. Provides a strong theoretical and practical basis for STEM-related jobs.

POLITICS, PHILOSOPHY AND ECONOMICS BA

Provides an in-depth analytical foundation for politics, philosophy and economics, with a special emphasis on critical thinking and writing skills. Three options are offered: **ECONOMICS, INTERNATIONAL STUDIES** and **POLITICS AND PHILOSOPHY**.

PSYCHOLOGY BA

Explores the psychological, biological, and contextual determinants of human behavior. Examines philosophical, historical and cultural traditions, including feminism, existentialism, hermeneutics, psychoanalysis and critical theory.

SPANISH LANGUAGE AND CULTURES BA

Develops Spanish language skills, intercultural competence, and knowledge of cultural, historical, and political contexts of Spain, and the Americas. All upper-level courses are taught in Spanish.

WRITING STUDIES BA

Learn to write dynamically in a range of genres for diverse audiences, and to think critically and creatively, with a well-rounded liberal arts education in the sciences and the humanities. Two tracks are offered: **CREATIVE WRITING** and **TECHNICAL COMMUNICATION**.

CAREER-FOCUSED DEGREES + MAJORS



SCHOOL OF ENGINEERING & TECHNOLOGY

COMPUTER ENGINEERING AND SYSTEMS BS

Studies the design, construction and implementation of hardware/software elements to put you at the forefront of modern circuit and microprocessor design, software engineering and embedded systems.

COMPUTER SCIENCE AND SYSTEMS BA

Paves the way to a specialized technology focus through an interdisciplinary major that pairs core computer science coursework with a required minor of your choosing.

COMPUTER SCIENCE AND SYSTEMS BS

Develops a strong foundation in the theory and direct application of computer science principles to design software that meets current industry needs.

ELECTRICAL ENGINEERING BS

Designs circuits, algorithms and devices to collect, store, transfer and display electronic information for applications in communications, signal processing, electromagnetics, power, controls, and embedded systems.

INFORMATION TECHNOLOGY BS

Builds a theoretical and practical framework for analyzing, designing, integrating, and managing information systems to meet the needs of end users. Program emphasizes application, deployment, configuration and development of information management technology.

MECHANICAL ENGINEERING BS NEW

Develops the skills and experience to apply principles of engineering, basic science, and mathematics to model, analyze, and design systems in healthcare, energy, manufacturing, aerospace and robotics.



Starting at orientation, **UW Tacoma's Career Development Center** works

with you inside and outside of the classroom to help you make career decisions and demonstrate your talents, skills, and strengths to employers for success beyond graduation.



MILGARD SCHOOL OF BUSINESS

Offers the following options for the Bachelor of Arts (BA) in Business Administration:

ACCOUNTING

Focuses on recording and reporting financial transactions and the use of that data in fiscal decision making in public and private accounting.

FINANCE

Studies financial markets, portfolio management, financial planning, investing, banking and how financial services function in a global economy.

GENERAL BUSINESS

Customizable path exploring a wide range of business disciplines, including data analytics, entrepreneurship, finance, international business, management and marketing.

MANAGEMENT

Enhance your ability to get work done with and through other people in a variety of organizations and learn how to manage in the 21st century.

MARKETING

Studies consumer behavior, product development, advertising, retailing, sales management, distribution and social media to develop competitive marketing strategies.



SCHOOL OF NURSING & HEALTHCARE LEADERSHIP

HEALTHCARE LEADERSHIP BA

Explores health care issues, provides preparation for leadership roles in a variety of organizations and incorporates social marketing, information management, budgeting and diversity to promote health.

NURSING RN TO BSN*

Provides an efficient path for Registered Nurses (RN) to the Bachelor of Science in Nursing (RN to BSN) degree. Emphasizes communication, critical thinking, cultural sensitivity, policy, health promotion and quality management.

*You must be a RN licensed in Washington before starting this program.

Want to learn more about a particular major?
tacoma.uw.edu/requests



SCHOOL OF SOCIAL WORK &
CRIMINAL JUSTICE

CRIMINAL JUSTICE BA

Offers a multidisciplinary understanding of crime and justice from a social justice perspective, preparing you for careers in criminal justice or pursuing graduate or law school study. **ONLINE OPTION AVAILABLE.**

SOCIAL WELFARE BA

Prepares competent, ethical and culturally sensitive social workers committed to social justice and evidence-based practice with an emphasis on poor and underserved populations.

BRIDGET

'21 Urban Studies

Bridget came to campus to study the world. “I wanted a broader perspective on the issues facing cities around the world,” she said. Bridget earned her associate’s degree from Tacoma Community College as a Running Start student.



GLOBAL OPPORTUNITIES

STUDYING ABROAD is an excellent opportunity to develop real-world skills, explore new cultures, and broaden perspectives while earning college credits. UW Tacoma students are eligible for study abroad scholarships and can also participate in many study abroad programs offered by any UW campus. **tacoma.uw.edu/global-affairs**



SCHOOL OF
URBAN STUDIES

SUSTAINABLE URBAN DEVELOPMENT BA

Studies the global movement for significant “greening” of urban development through environmental quality, economic prosperity and social equality.

URBAN DESIGN BS

Urban design is the art and science of creating and improving livability in our cities. Uses community engagement and digital skills to produce design solutions.

URBAN STUDIES BA

Studies cities and how they function, how people interact, the role of government, and how growth and development are planned. The major offers the following options: **COMMUNITY DEVELOPMENT & PLANNING, GIS & SPATIAL PLANNING** and **GLOBAL URBANISM**.

THE GLOBAL HONORS PROGRAM adds distinction to any degree and offers curricular pathways in **Global Leadership and Global Citizenship**, and a **Minor in Global Engagement**. Global Honors offers a stimulating learning environment, an innovative and experientially rich curriculum, highly invested faculty, generous scholarships and awards, specialized advising, and an active community of critically engaged students. Open to qualified students of all majors, it is designed to increase the depth and breadth of student understanding of critical global issues. **tacoma.uw.edu/global-honors**

6 DOWNTOWN
MUSEUMS



69 CITY
PARKS



182 COFFEE
SHOPS

30 MINUTES
TO SEATAC

DISCOVER TACOMA

TACOMA IS GROWING

But some parts of our city will never change. Here you belong to a community, a bustling metropolis that feels more like a neighborhood. The feeling's the same whether you're walking Pacific Avenue shops, restaurants and museums or riding the LINK to see a show in the theater district or catching a game at Cheney Stadium. The streets are busy but you're never far away from adventure. Whether you travel by car or public transportation you'll find what you're looking for and more. We're not big but neither are we small. We are the right size. We have room for more: more entertainment, food, parks, concerts, business, jobs. We have room for you.

THE CITY IS YOUR



8



216,271 2019 TACOMA
POPULATION

39" ANNUAL RAINFALL
U.S. AVG IS 41"



THAT'S LESS THAN
NEW YORK CITY!

TOP20

GAME-CHANGING PLACES TO LIVE

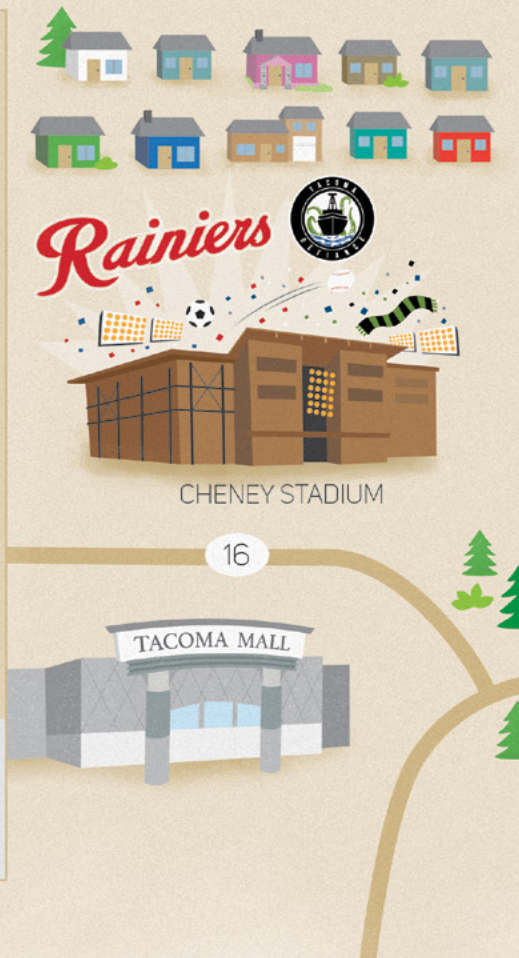
SUNSET MAGAZINE, JAN. 2018

THINGS TO DO

Downtown music & arts
Theater District
International food
Top museums
Tacoma Rainiers AAA Baseball
Tacoma Defiance Soccer
Pt. Defiance Zoo & Aquarium
Ruston Waterfront
Tacoma Dome concerts
Farmers' markets
Washington State Fair
Biking/hiking trails

CAMPUS







DASH POINT

Welcome to

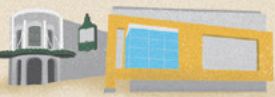
TACOMA

STADIUM DISTRICT



WRIGHT PARK

THEATRE DISTRICT



CONVENTION CENTER

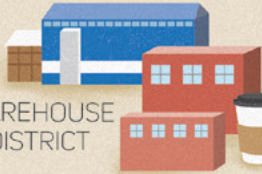


TACOMA ART MUSEUM

TAM



WAREHOUSE DISTRICT



W
TACOMA

GLASS MUSEUM

WASHINGTON STATE
HISTORY MUSEUM



TACOMA DOME



PUYALLUP
TRIBE of INDIANS



MCKINLEY PARK

WASHINGTON
STATE FAIR



LINCOLN DISTRICT



LINCOLN
PARK







4,787

HOURS LOGGED IN 2019-20 BY THE COMMUNITY SERVICE
AND LEADERSHIP STUDENT VOLUNTEERS

STUDENT LIFE

GET INVOLVED

From academic to cultural and social, there are many different clubs on campus, each with its own focus. The **Student Activities Board** and **Center for Equity & Inclusion** sponsor a variety of cultural, entertainment and social-issue events during the academic year.

Engage with the **Associated Students of UW Tacoma (ASUWT)**, an elected body that represents student interests on campus and in the community. tacoma.uw.edu/involvement

GET A BITE TO EAT

Restaurants and coffee shops are located right on campus and are open for breakfast, lunch, dinner and beyond. uwtdowntown.com

STAY HEALTHY

The **University Y Student Center** has a game lounge, basketball court, cardio, weights, a climbing wall, an indoor track and locker rooms. The University Y offers a variety of activities—including fitness classes, intramurals, personal training and outdoor trips. UW Tacoma students automatically receive a membership to ALL YMCA locations in the country. tacoma.uw.edu/uwy

SERVE YOUR COMMUNITY

Looking to get engaged on and off campus? Participating in community service helps students who want to make a difference in the community grow as future leaders. You can volunteer at local nonprofits, attend local service events on and off campus, or participate in several programs designed for student schedules! Learn more about **Community Service and Leadership** programs at tacoma.uw.edu/CSL

SERVE YOUR COUNTRY

UW Tacoma participates in **Army ROTC** in partnership with Pacific Lutheran University. For more info on ROTC and other programs, contact the Army ROTC Career Counselor at: ROTC@plu.edu, or call 253-535-8740.

BE ENTERTAINED

Walk across the street and check out a museum or hop aboard the LINK train to the **Tacoma Dome** for a concert or go the other way to the **Theater District**. You could always stroll the shops around **Pacific Avenue** or take a walk to **Alma Mater**. There you'll find a cafe and the occasional show or even night market. If you're looking to get away from the hustle and bustle, consider soaking up the scenery at **Point Defiance Park** and **Point Ruston Waterfront**. There's lots to discover!



SEONHWA

'21 Psychology;
ASUWT Director of Outreach

It took a little while for Yelm High School graduate Seonhwa to feel at home on campus. The shift came when she decided to get more involved through ASUWT. Seonhwa is also active in the registered student organization Campus Adult Ministries and help found the Korea Student Association. "I think the people I've met throughout the years have really helped me feel like I belong at UW Tacoma."

ON CAMPUS HOUSING

DISCOVER A UNIQUE LIVING EXPERIENCE AT UW TACOMA

Living on campus allows you to build relationships with a diverse set of peers. **UW Tacoma's Court 17 Residence Hall** offers all the conveniences of apartment-style living coupled with exclusive events and activities, a vibrant community of learners, and a safe environment that facilitates academic success.

Newly-admitted students should apply for housing by the priority deadline of May 1. Applications will continue to be accepted on an ongoing basis. For more information and to apply for housing: tacoma.uw.edu/housing

COURT 17 OFFERS:

- Spacious studio, 1- and 2- bedroom units (shared) each with private bathrooms
- Utilities and high speed internet included
- Furniture essentials provided
- Full kitchen, including refrigerator, oven, sink, dishwasher and microwave.
- Washer and dryer in all units
- Community room
- Secured parking garage with paid permit

HOUSING RATE FOR 2020-21

Academic year (9-months)

\$7,353 - \$12,663* per academic year, depending on type of apartment.

*Meals and parking not included. Room capacities may be impacted by COVID-19 guidelines.



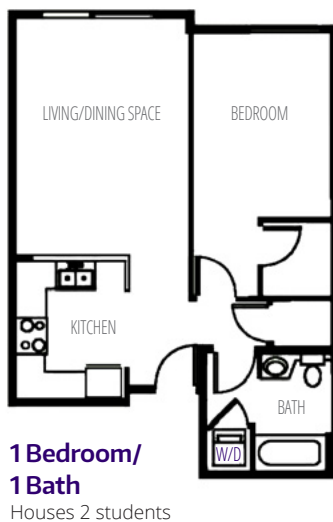
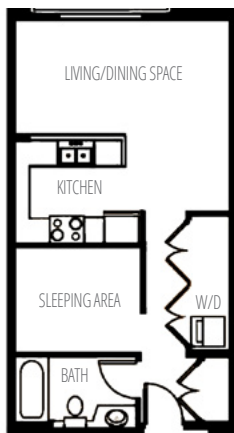
BENEFITS OF LIVING ON CAMPUS

- Convenient and close to classes
- Hall staff live on each floor
- Events + leadership opportunities specifically for Court 17 residents
- Safe living environment with controlled entry access
- Amazon locker located across the street
- In-hall self-checkout micromarket available 24/7 for snacks and essentials
- Walking distance to shops, restaurants, museums and parks
- Convenient access to public transportation (with UW ID)



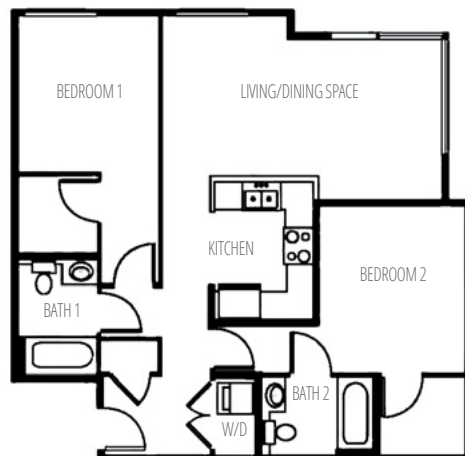
Studio/1 Bath

Houses 2 students



2 Bedroom/2 Bath

Houses 4 students





APPLY BY
JAN15
FOR PRIORITY
CONSIDERATION

ADMISSION

All students who hold a 2.0 high school GPA and meet all College Academic Distribution Requirements (CADRs) and present a complete application will be reviewed.

HIGH SCHOOL REQUIREMENTS (CADRS)

- English - 4 yrs
- Math - 3 yrs
 - Algebra
 - Geometry
 - Algebra II
- Social Sciences - 3 yrs
- Lab Science - 2 yrs
- World Language - 2 yrs
- Fine, Visual or Performing Art - 0.5 yr
- Academic Elective - 0.5 yr
- Sr. Year, Math-Based Quantitative Course- 1 yr
Intermediate algebra (or higher), stats, chemistry or physics

For more details, please visit:

tacoma.uw.edu/cadrs

RUNNING START STUDENTS

Be sure to:

- Apply as a freshman
- Send your official community college transcripts in June.
- Meet with an Admissions Advisor to discuss your credits

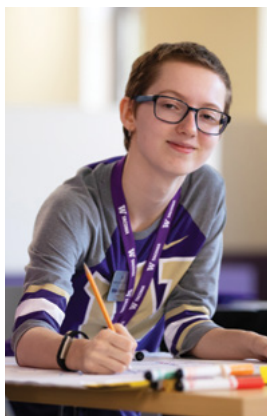
QUESTIONS?



Contact an admissions advisor. We are available for one-on-one consultations to answer your questions and help you navigate the admission process.

tacoma.uw.edu/meet-your-advisor

253-692-4742 or 800-736-7750
uwtinfo@uw.edu



MAX

'21 Ethic, Gender and Labor Studies

Max originally wanted to major in history but switched to ethnic, gender and labor studies. "The things I enjoyed hearing about the most were stories of how people and marginalized communities overcame hardship." Max graduated from Thomas Jefferson High School and chose UW Tacoma because the university is community based and committed to social justice.



HOW TO APPLY

1. Go to **tacoma.uw.edu/apply** to start a freshman application.
2. Create a CollegeNet user name and password.
3. Provide academic interest, demographic data, and family history information.
4. Upload your **Unofficial Transcript**.
5. Complete a solid **Personal Statement**. This is our best means of getting to you. You will be given a choice of essay prompts. It's best to first write your statement in a word processing program and then copy/paste it in the application text box.
6. Complete the **Activity Log**. You may share details about five activities in which you have participated.
7. **Provide More Information**. If you have a GPA below 2.7, we highly recommend you provide more information regarding your situation or explain any portion of your application.
8. Pay the **application fee** or request a **fee waiver**. At the end of the application, you will be prompted to submit a payment of \$60 or you may request a fee waiver. Should a waiver be granted, you will receive an "application received" confirmation email. If not, you will be asked to pay the \$60 fee.
9. If you are providing an **SAT** or **ACT** test score, submit official scores directly from the testing agency.

SAT Code: **4445** / ACT code: **4493**



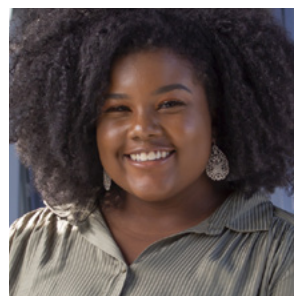
You should turn in a complete application online as early as possible for priority consideration for admission and scholarships. Applications received after the **priority application date of January 15** will be considered on a space-available basis.

APPLY BY
JAN 15

KIRSTEN

'21 Biomedical Sciences;

Kirsten jumped right into college life from Bonney Lake High School and soon got involved with campus research projects and student government. "I chose UW Tacoma because it just seemed like I didn't have to try to be something I wasn't," she said. "I could be myself."



NEED HELP?

tacoma.uw.edu/admissions

253-692-4742

uwinfo@uw.edu



COSTS + FINANCIAL AID

FINANCIAL AID



To qualify for Financial Aid, you must file a **FAFSA** or **WASFA**.
This process allows the university to offer grants, loans and/or work-study.
It is in one's best interest to complete this application by Jan. 15.

FRESHMAN MERIT SCHOLARSHIPS

All admissions applicants are automatically considered for these merit-based scholarships; no additional materials are necessary but **your application must be received by Jan. 15**. For more scholarship information and resources, visit tacoma.uw.edu/scholarships

STATE FINANCIAL AID FOR UNDOCUMENTED RESIDENTS

The Real Hope Act, signed into law in 2014, extends Washington State Need Grant eligibility to some undocumented residents. Complete the WASFA application online: readysetgrad.org/WASFA

IN-STATE STUDENTS

Estimated Tuition..... \$11,898

Room/Board..... \$4,371-12,258

Books..... \$900

Transportation \$1,044

Personal \$2,316

TOTAL \$20,529-28,416

OUT-OF-STATE STUDENTS

Estimated Tuition..... \$39,267

Room/Board..... \$12,258

Books..... \$900

Transportation \$1044

Personal \$2,316

TOTAL \$55,785

THE HUSKY PROMISE



We believe students from all economic backgrounds should have the opportunity to attend UW

Tacoma. **HUSKY PROMISE** is our guarantee to Washington residents that we will not let financial challenges stand in the way. Full tuition and standard fees will be covered by grant or scholarship support for eligible students. **Guaranteed.** If tuition increases, so will your financial aid.

To qualify, you must be a Washington resident, qualify for the federal Pell Grant or the State Need Grant, be a full-time admitted student pursuing a first bachelor's degree, maintain satisfactory academic progress and **submit the FAFSA or WASFA each year by Jan.15**.

Husky Promise is limited to 12 quarters of eligibility at the UW. For more information visit huskypromise.uw.edu

THE NET PRICE CALCULATOR TOOL



This online tool is designed to help students and their families estimate financial aid awards and the net cost to attend UW Tacoma:

tacoma.uw.edu/netpricecalculator

For more financial aid information:

tacoma.uw.edu/finaid



* A measure used to spotlight colleges that "help non-wealthy students attain marketable degrees at affordable prices." Washington Monthly, Aug. 2018.

\$1,162,852

IN SCHOLARSHIPS
AWARDED 2018-19

tacoma.uw.edu

START HERE!

The UW Tacoma
Admissions office:

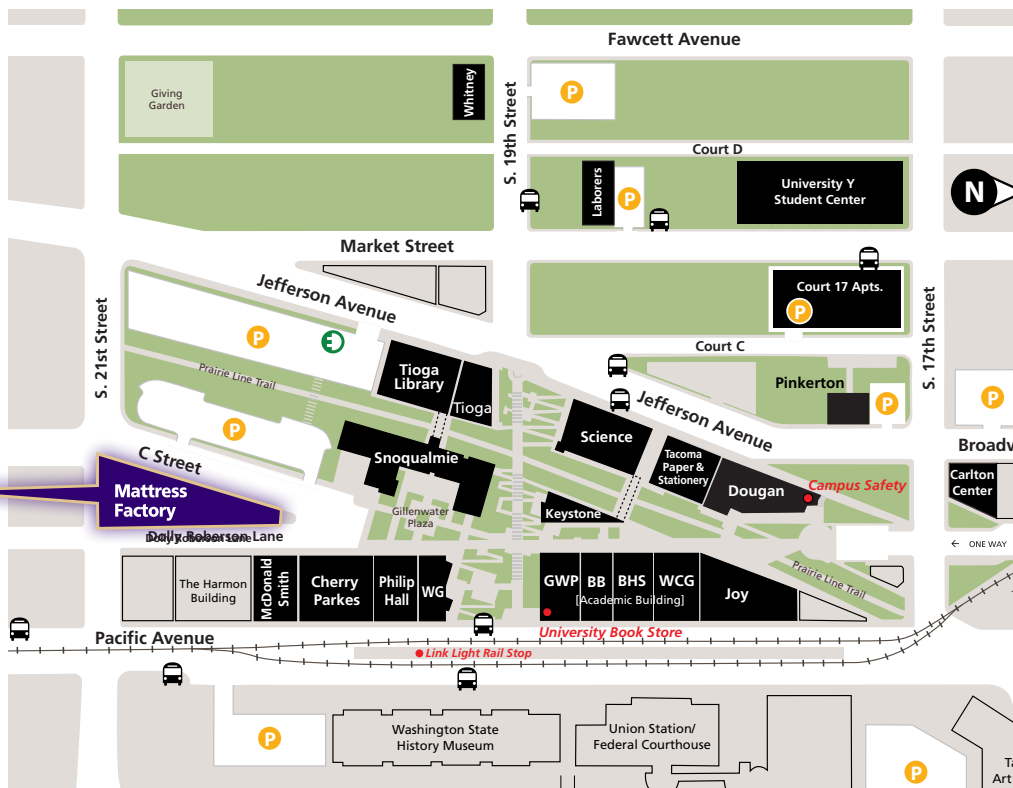
↓ **MAT 251**
M-F 8AM-5PM



SIMRAT

'21 Psychology;
Criminal Justice

Simrat keeps busy. Along with her double major, she is also part of two psychology research labs on campus. This past summer she interned at **Tacomaprobono**. The local non-profit offers a variety of free legal services to people in Pierce County. "I felt like UW Tacoma was a place where I could thrive because it is a small, tight-knit community."



VIRTUAL VISITS

UW Tacoma is currently hosting virtual visitation experiences until further notice. Please email uwinfo@uw.edu to request a meeting. It is our goal to serve you to the best of our ability:
tacoma.uw.edu/visit

Our live webinars offer a variety of topics! You'll find everything from how to apply to a live campus tour, sessions in Spanish, and Q&A time with current students: **tacoma.uw.edu/admissions/webinar**

Are you interested in a one-on-one advising meeting? Email uwinfo@uw.edu. We will happily set something up just for you.

STAY CONNECTED!

Join our mailing list. We'll let you know about upcoming events and application deadlines: **tacoma.uw.edu/requests**

tacoma.uw.edu

Office of Admissions
University of Washington Tacoma
1900 Commerce Street, Tacoma, WA 98402-3100



IMPORTANT DATES FOR FRESHMAN APPLICANTS:



OCTOBER 1

FAFSA/WASFA OPENS

FAFSA.ED.GOV OR READYSETGRAD.ORG

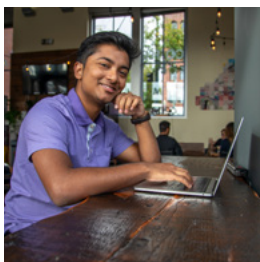
ATTEND

VIRTUAL PREVIEW

TAKE A PEEK AT COLLEGE LIFE!

OCT 23, NOV 6 or DEC 4.

REGISTER ONLINE: tacoma.uw.edu/preview



JANUARY 15

**PRIORITY ADMISSIONS AND
SCHOLARSHIP CONSIDERATION**

SUBMIT FAFSA/WASFA



MAY 1

**ACCEPT ADMISSIONS, ACCEPT SCHOLARSHIPS,
APPLY FOR HOUSING**

QUESTIONS? uwtinfo@uw.edu



APPLY NOW

tacoma.uw.edu/apply